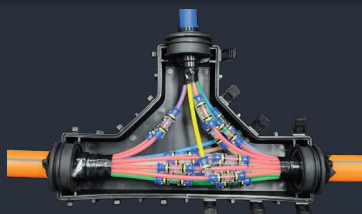




Knet provides a complete array of accessories to fulfill your fiber pathway needs including Connectors, End Caps, Reducers, Tube Branching Units, Tools.



Straight Connector
Connector Cover
End Cap
Reducer
Gas-block Connector
Bulkhead Connector
Reducer Gas Block
Locking Pin
DBL Connector & End Cap
Tools



KNET Co., LTD
www.e-knet.com
inquiry@e-knet.com

This specification is intended as a guide only. Whilst the information it contains is believed to be correct, KNET can take no responsibility for action taken based on the information contained in this document. KNET reserved the right to make changes to this document without notice. All sales of product are subject to KNET's terms and conditions of sales only.

Any unauthorized copying of this document or our products is prohibited and KNET will take action to prevent any infringement of its rights and to claim damages for the loss that it suffers.

Document No: MDAcc-24-1

Provides Solutions for Next 

Straight Connector



Description

The Push-fit straight connectors manufactured with high quality materials and transparent body assure easy and quick installation.

The connector can be re-used 10 times remaining maintained the high performance requirements for air-blown installation systems.

Size (mm)		Product Codes
OD	ID	
3	2.1	RC3AU
4	2.5	RC4BU
5	3.5	RC5AU
6	4	RC6BU
7	5.5	RC7CU
7	3.5	RC7AU
8	6	RC8CU
8	3.5	RC8AU
10	8	RC10BU
12	10	RC12BU
14	12	RC14CU
14	10	RC14AU
16	14	RC16CU
16	13	RC163AU
16	12	RC16AU
18	16	RC18BU
18	14	RC18AU

Main Features & Characteristic

- Material: Clear PC
- Leakage Pressure: 15 bar
- Negative Pressure: 750mm Hg(10 Torr)
- Proof Pressure: 25 bar
- Temperature Range: -10 ~60°C
- For Tubing Type: PE, PU, Nylon, Polyurethane
- Burst Pressure: > 25bar
- Water Immersion test: Pass (Water proof)
- Push-fit test: Pass
- Hydraulic pressure test: Pass(Resisting at 13 bar for 2 minutes)

※ Please inquiry different size from the table

Connector Cover



Description

The connector cover is typically used in place of a duct closure to protect the connector and the end cap for direct burial.

Size (mm)	Product Codes
5	RCC5U
7	RCC7U
8	RCC8U
10	RCC10U
12	RCC12U
14	RCC14U
16	RCC16U
18	RCC18U

Main Features & Characteristic

- Connector protection to withstand external impact and crush.
- Lock Pin function to prevent tube escape.
- Prevention from the inflow of sand and mud into the connector groove.
- Easy to install and remove.
- Used for Direct burial, manhole (hand hole), in-building.
- Used for end cap protection as well.
- Material : Polypropylene

※ Please inquiry different size from the table

End Cap



Description

The end cap for permanent or temporarily sealing of unused microducts to prevent obstacles such as water, mud, dust and so on.
The body is transparent for easy fault location and fix the problem easily during installation

Size (mm)	Product Codes
3	RE3AU
4	RE4AU
5	RE5AU
6	RE6AU
7	RE7AU
8	RE8AU
10	RE10AU
12	RE12AU
14	RE14AU
16	RE16AU
18	RE18AU

Main Features & Characteristic

- Material: Clear PC
- Leakage Pressure: 15 bar
- Negative Pressure: 750mm Hg(10 Torr)
- Proof Pressure: 25 bar
- Temperature Range: -10 ~60°C
- Burst Pressure: BT MA 321 High Pressure Performance
- hydraulic pressure test: Pass(Resisting at 13.5kgf/cm² for 2 minutes.)
- Burst Pressure: > 25bar
- Water Immersion test: Pass (Water proof)

※ Please inquiry different size from the table

Reducer



Description

The Reducer allows interconnection between microducts that are difference in outer diameters. Usually, this is used in the point of transition from DB to DI microducts entering the office, house.

Size (mm)		Product Codes
5.3.5	3/2.1	RR53AU
5/2.1	4/2.1	RR54AU
7/4	4/2.1	RR74AU
7/3.5	5/3.5	RR75BU
8/4.4	5/3.5	RR85AU
8/5.5	5/3.5	RR85BU
10/8	8/6	RR10EU
10/8	8/5.5	RR10FU
10/6	8/6	RR10GU
10/5.5	7/5.5	RR10CU
10/8	7/3.5	RR10DU
12/8	10/6	RR12FU
12/8	10/8	RR12GU
12/10	10/8	RR12HU
12/10	7/3.5	RR12BU
12/10	7/5.5	RR12CU
14/10	12/8	RR14FU
14/10	12/10	RR14HU
14/12	12/10	RR14GU
16/12	14/10	RR16DU
16/12	12/10	RR16BU
16/12	12/8	RR16CU

Main Features & Characteristic

- Material: Clear PC
- Leakage Pressure: 15 bar
- Negative Pressure: 750mm Hg(10 Torr)
- Proof Pressure: 25 bar
- Temperature Range: -10 ~60°C
- Burst Pressure: > 25.5kgf/cm²
- Water Immersion test: Pass (Water proof)
- Expected Life time: Minimum 20 years
- hydraulic pressure test: Resisting at 13.5kgf/cm² for 2 minutes

※ Please inquiry different size from the table

Gas Block Connector



Description

The design of Gas block is to prevent the gas leaking at the point where the connection between a duct and fiber optic cable inside.

Gas block connector can be installed at home, office, inside building not to allow the inflow of materials which has the harmful gas, water and dust.

Size (mm)		Product Codes
MD	Cable	
5	0.5-3.5	RGAAU
7	1-4.6	RGBAU
8	3-6	RGCAU
10	3-6	RGEAU
10	5-8	RGEBU
12	3-6	RGFAU
12	5-8	RGFBU
12	7-10	RGFCU
14	3-6	RGHAU
14	5-8	RGHBU
14	7-10	RGHCU
14	9-12	RGHDU
16	3-6	RGJAU
16	5-8	RGJBU
16	7-10	RGJCU
16	9-12	RGJDU

Main Features & Characteristic

- Blowing Pressure: Between temperatures of -10°C and +60°C, all connectors size can be used for blowing operations at pressures up to 16bar.
- Burst Pressure: > 26bar
- Gas Tightness:
 - Leakage at 16 bar gas pressure: 1ml/min
 - Leakage at 0.7bar gas pressure: 0.1ml/min
- Water ingress: The connectors shall seal against a 6m head of water.
- Insertion force: 50N max (5kg)
- Retention force: 55N min (5mm m/d)
135N min (12mm m/d)
155N min (14mm m/d)
(collect not held in)

※ Please inquiry different size from the table

Bulkhead Connector



Description

The Bulkhead Connector is used for distributing and arranging the inner tubes of bundled microduct on the frame combined by Mounting Rack and Patch Panel, which is mostly installed in MDF room of the building.

The structure of bulkhead is to fix the connector the hole of the Patch Panel. It's also suitable to apply in Air Blown System.

Size (mm)

Product Codes

5/3.5

RBC5U

Main Features & Characteristic

- Material: POM
- Leakage Pressure: 15 bar
- Negative Pressure: 750mm Hg(10 Torr)
- Proof Pressure: 25 bar
- Temperature Range: -10 ~60°C
- For Tubing Type: PE, PU, Nylon, Polyurethane
- Burst Pressure: > 25bar
- Water Immersion test: Pass (Water proof)
- Push-fit test: Pass
- Hydraulic pressure test: Pass(Resisting at 13 bar for 2 minutes)



Tube Patch Panel

Reducer Gas Block



Description

The Reducer Gas block connectors have integrated functions of Reducer and Gas block connectors in one connector.

It is designed to connect two different sized tubes and block gas and water at the same time.

Size (mm)		Product Codes
MD	Cable	
7-5 Reducer	0.5-3.5	RRG75U
8-7 Reducer	1-4.6	RRG87U

Main Features & Characteristic

- Blowing Pressure: Between temperatures of -10°C and +60°C, all connectors size can be used for blowing operations at pressures up to 16bar.
- Burst Pressure: > 26bar
- Gas Tightness:
 - Leakage at 16 bar gas pressure: 1ml/min
 - Leakage at 0.7bar gas pressure: 0.1ml/min
- Water ingress: The connectors shall seal against a 6m head of water.
- Insertion force: 50N max (5kg)
- Retention force: 55N min (5mm m/d)
135N min (12mm m/d) 155N min (14mm m/d)
(collect not held in)

※ Please inquiry different size from the table

Locking Pin



Description

The Locking Pin is used together with the Straight Connector or End Cap, to reinforce the connection between tube and connector or end cap, avoiding the possible falling-off.

The Locking Pin is designed just as big as the groove of Connector/End cap, so that it will not easily fall off.

Size (mm)	Product Codes
5	RLCAU
6	RLCBU
7	RLCCU
8	RLCDU
8.5	RLCEU
10	RLCFU
12	RLCGU
12.7	RLCHU
14	RLCJU
16	RLCKU
18	RLCMU
20	RLCNU
22	RLCPU

Main Features & Characteristic

- Easy installation
- Small but strong effect

※ Please inquiry different size from the table

DBL Connector & End Cap

Specification



Description

The DBL connector and endcap is used at the end point of direct buried thick walled microduct to prevent from the potential obstacles such as dust, water and so on.

With the same functionality as conventional connectors or endcaps, installation simply involves pushing the microduct into the end cap.

DBL Connector

Size (mm)	Product Codes
7/4	RDC7U
8/4	RDC8U
10/6	RDC10U
12/8	RDC12U
14/10	RDC14U

Main Features & Characteristic

- Material: HDPE
- Leakage Pressure: 15 bar
- Negative Pressure: -750mm Hg(10 Torr)
- Proof Pressure: 25 bar
- Temperature Range: -10 ~60°C
- Burst Pressure: > 25.5kgf/cm²
- Water Immersion test: Pass (Water proof)
- Expected Life time: Minimum 20 years

DBL End Cap

Size (mm)	Product Codes
7	RDE7U
8	RDE8U
10	RDE10U
12	RDE12U
14	RDE14U

※ Please inquiry different size from the table

Tools

Microduct Duct Cutter

Microduct Cutter is used for precise cutting of PP and PE pipes with minimum effort. Knife blades deliver clean and straight cuts on pipe diameters up to 63mm and especially for all the current plastic types used in installation. The aluminum construction guarantees precise operation and long professional service use.



Product Code	Cutting Range	Dimension	Weight
MDC63	63mm	300mm * 75mm	710g
MDC42	42mm	200mm * 55mm	230g

Microduct Duct Sheath Remover & Hook Cutter

The Microduct Sheath Remover(Slitter) is used when dismantling the outer sheath of a double-sheathed microduct (direct buried) and Hook cutter is for others i/o TWD



Product Code	Cutting depth	Dimension	Weight
MSR08 (Sheath Remover)	5mm	150mm * 35mm	170g
MHC25(Hook Cutter)	25mm	170mm * 45mm	50g

Microduct Tube Cutter

The Microduct Tube Cutter is used in the situation of cutting a tube cleanly 90 °in order to make a connection with another tube perfectly



Product Code	Cutting Range	Dimension	Weight
MTC14	14mm	150mm * 35mm	30g

Microduct Tube Deburring Tool

The Microduct Tube Deburring It is used in the situation of the tube after cutting, the inside of the tube can be gently cut to increase the blowing performance.



Product Code	Blade	Dimension	Weight
MDBE100	E100	145mm * 10mm	50g

Microduct Round Cutter

This Telescopic ratchet pipe cutter is used for precise cutting of PP, PE pipes as well as sound-insulated drain pipes.



Product Code	Model	Duct Size (mm)	Cutting depth (mm)	Weight (g)
TDC3R	TC 67 PL	Φ 6 - 67	7	700

Tube Boundary Cutter

Tube Round Cutter is used to cut the tube without causing any damage to fiber installed inside. Depending on sizes of individual tube, different sizes of cutter such as 4 & 5mm, 6 & 7mm can be used.



Item	Division	Product Codes	Dimension (mm)			Weight(g)
			L	H	W	
Tube Round Cutter	4 / 5	TRCAK	45	28	23	15
	6 / 7	TRCBK	50	28	23	16
Tube Sheath Cutter	-	TSCAK	64	36	23	31

Microduct Dismantling Tool

Duct Dismantling Tool is used to remove thin layer of Microduct sheath. By adjusting the length of knife blade, duct sheath can be easily removed for the size between Φ 4 ~ 50mm.



Product Code	Duct Size (mm)	Dimension (mm)	Weight (g)
TDSAL	Φ 4 - 16	128	75
TDSBL	Φ 8 - 28	132	77
TDSCL	Φ 28 - 35	153	85
TDSL	Φ 35 - 50	166	90

Tool Kit Case

Specification



Tool Kits in Case

Knet's Microduct **Tool Kit Case** contains a total of 7 tools. It consists of special Microduct tools that can be used efficiently at the installation site. This portable toolbox is an essential item for Microduct cutting, branching and termination. The inside is protected by a sponge and the exterior is made of a lightweight aluminum body.



450X350X100mm
Gross Weight 4kg

Microduct Duct Cutter

Product Code	Cutting Range	Dimension	Weight
MDC63	63mm	300mm * 75mm	710g
MDC42	42mm	200mm * 55mm	230g

Microduct Duct Sheath Remover & Hook Cutter

Product Code	Cutting depth	Dimension	Weight
MSR08 (Sheath Remover)	5mm	150mm * 35mm	170g
MHC25(Hook Cutter)	25mm	170mm * 45mm	50g

Microduct Tube Cutter

Product Code	Cutting Range	Dimension	Weight
MTC14	14mm	150mm * 35mm	30g

Microduct Tube Deburring Tool

Product Code	Blade	Dimension	Weight
MDBE100	E100	145mm * 10mm	50g



Duct cutter



Slitter



Hook Cutter



Tube cutter



Deburring Tool

KNET has met and maintains the rigorous standards required to become a Certified ISO 9001, ISO 14001 and TL9000 manufacturer. KNET Microduct Assemblies has been rigorously tested by Telcordia Technologies and found to be compliant to Telcordia GR-3155-CORE.

